

# Pre-intubation Checklist

## Prepare Patient

- History reviewed?** (*previous grade of laryngoscopy, past anaesthetic problems, previous ETT size/length*)
- Airway assessment?** (*any features of a predictably difficult airway*)
- Adequately fasted?** (*consider risks/benefits of delaying intubation/RSI if not fasted*)
- Pre-oxygenated?** (*unless contraindicated*)
- Optimal positioning?** (*ear-to-sternal notch - consider shoulder roll in infants or pillow in older child*)
- Reliable access?** (*consider IO if difficult*)
- Optimal haemodynamics?** (*consider fluid bolus +/- peripheral vasoactive drugs pre-induction*)
- NG tube aspirated?** (*consider insertion if not already present*)

## Prepare Equipment

- Monitoring**
  - ECG** (*pulse tone on*)
  - Capnography** (*in circuit pre-induction*)
  - BP** (*cycling every minute in absence of arterial line*)
  - SpO<sub>2</sub>** (*good trace & not on same limb as BP cuff*)
- Airway Equipment**
  - All equipment available and working? (*equipment check overleaf completed*)
  - Additional equipment required? (*e.g. difficult airway trolley, video laryngoscope*)
- Drugs**
  - Any known allergies/drugs contraindicated?
  - Induction agents & muscle relaxant dose confirmed? (*↓ induction agent dose if CVS instability likely*)
  - Emergency drugs to be drawn up (labelled & double checked)?
    - Atropine
    - Adrenaline 1 in 100,000
    - Fluid bolus
    - Resus drugs

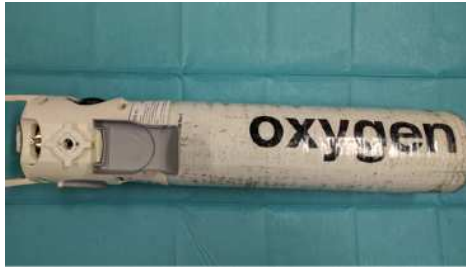
## Prepare Team

- Assign Roles**
  - Team leader
  - Airway doctor 1
  - Airway doctor 2
  - Airway assistant
  - Drug administration
  - NGT aspiration (*continuously during face mask ventilation*)
  - Cricoid pressure
  - Manual In-line stabilisation
- Prepare for failure**
  - What is likely to go wrong, who will deal with it and what should they do? (*failure to intubate, cardiovascular instability*)
  - Is any specialist help required? (*2<sup>nd</sup> consultant, ENT, trained airway assistant*)
  - Are we in the best location? (*move to PICU or theatre*)
  - Any questions or comments?
- Confirm plan**
  - Plan A
  - Plan B
  - Plan C
  - Plan D

# Equipment Check



**Mains Oxygen**   
(blender set to 100% - unless contraindicated)



**Oxygen Cylinder**   
(backup)



**Face Mask**   
(Inflated and correct size)



**ETCO<sub>2</sub>**



**Bagging Circuit**   
(connected to face mask, ETCO<sub>2</sub> in circuit & O<sub>2</sub> on)



**Self Inflating Bag**   
(backup)



**Flexible Suction Catheter**   
(6CH = ETT 2.5-3.0mm; 8CH = ETT 3.5-4.5mm; 10CH = ETT 5.0-5.5mm; 12CH = ETT 6.0-6.5mm; 14CH = ETT ≥ 7.0mm)



**Yankauer Suction**   
(connect to suction, test & leave suction turned on)



**Enteral Syringe**   
(large syringe to aspirate NGT)



**IV Syringe**   
(ETT cuff)



**Lubrication**



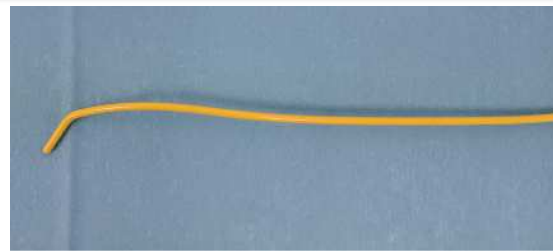
**Endotracheal Tube**   
(correct Size & +/- 0.5 mm; one lubricated and cuff checked)



**Laryngoscope Handle**   
(check working & spare available)



**Laryngoscope Blades**   
(intubator's 1st and 2nd choice)



**Bougie**   
(5CH = ETT 2.5 - 3.5mm; 10CH = ETT 4.0 - 5.5mm; 15CH = ETT ≥ 6.0mm)



**Stylet**   
(6CH = ETT 2.5 - 4.5mm; 14CH = ETT ≥ 5.0mm)



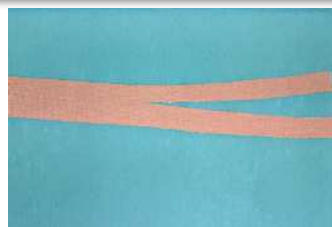
**Guedel Airway**   
(correct size)



**Forceps**



**Scissors**



**Tapes**



**Compound Benzoin Tincture**



**Manometer**



**Stethoscope**